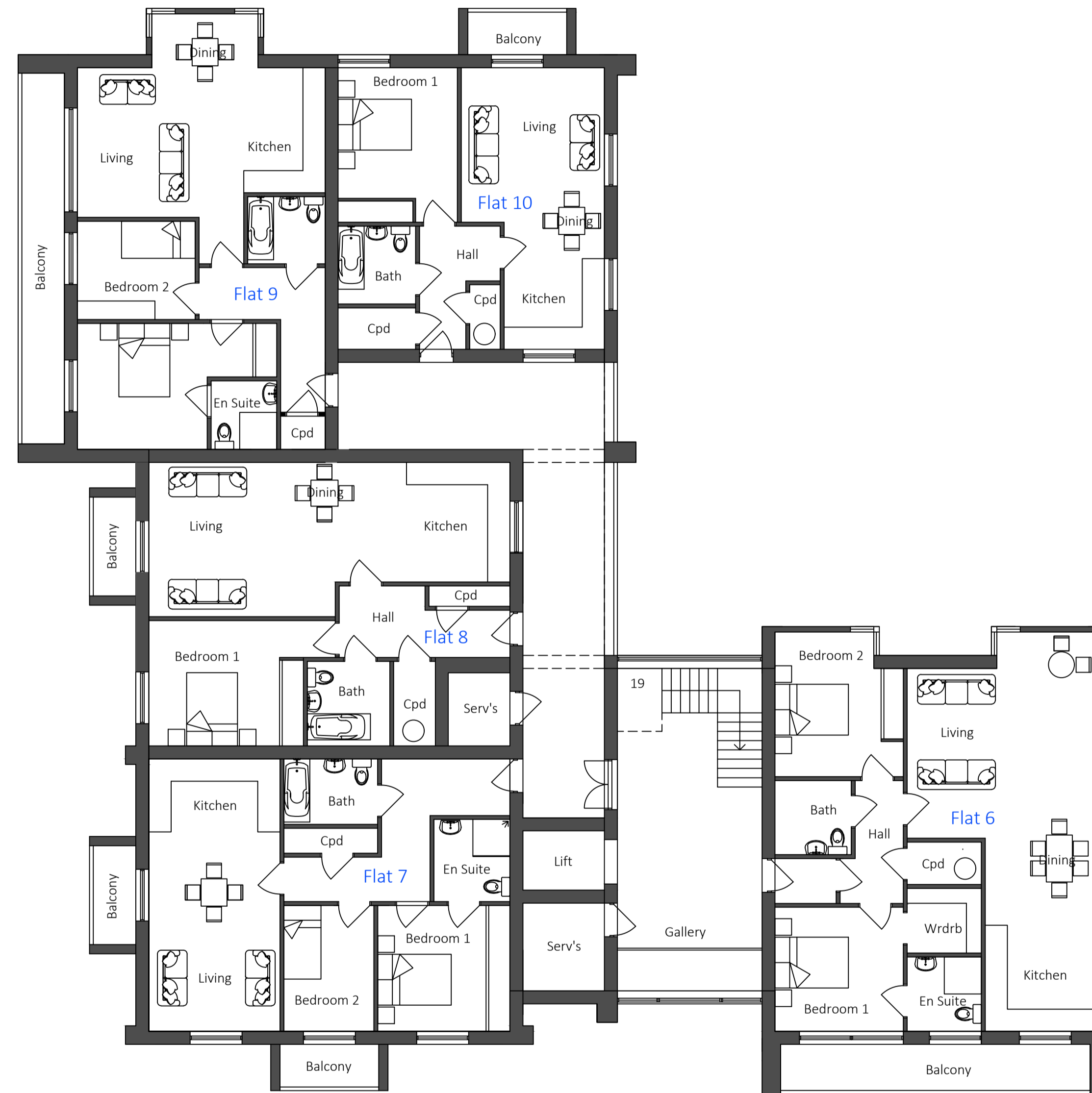


Ground Floor Plan
461sqm

- Total Site Area - 3328sqm (0.3 hectares)
- Flat 1 - 84.7sqm (911.7sqft)
- Flat 2 - 71.5sqm (769.6sqft)
- Flat 3 - 69.7sqm (750sqft)
- Flat 4 - 68.8sqm (740.6sqft)
- Flat 5 - 54.6sqm (587.7sqft)
- Flat 6 - 89.9sqm (967.7sqft) balcony 11.2sqm (120.5sqft)
- Flat 7 - 71.6sqm (770.7sqft) balconies 6.6sqm (71sqft)
- Flat 8 - 69.7sqm (750sqft) balcony 3.3sqm (35.5sqft)
- Flat 9 - 73sqm (785.8sqft) balcony 12.5sqm (134.5sqft)
- Flat 10 - 54.6sqm (587.7sqft) balcony 3.3sqm (35.5sqft)



First Floor Plan
471sqm
exc. balconies

Pond Cottage
Tanhouse Lane
Main Street
Peasmarsh
TN31 6YD

Proposed block of
10no. apartments
Floor Plans

Oak Tree
Homes Trust
Main Street
Peasmarsh
TN31 6YD

Scale: 1:100@A1

Date: May 24

Drawing No: PC/19c

